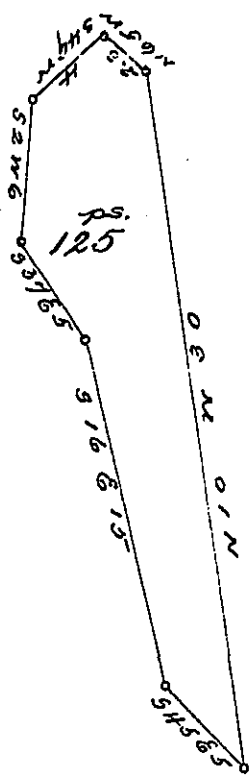


York County Shore



Lancaster County Shore

A Draught of Maple Island situated in the River Susquehanna in Manor Township Lancaster County opposite land of Philip Sowers on the East lands of Jacob Mueser on the west and about one hundred yards west of Middle Island containing one hundred & twenty five perches strict measure surveyed in pursuance of a warrant dated 13 of August 1814 granted to Charles Evans & John Hicks

Jacob Hesterman D. J.

To Jacob Spangler Esq.
Surveyor General

IN TESTIMONY that the above is a copy of the original remaining on file in the Department of Internal Affairs of Pennsylvania, made conformably to an Act of Assembly approved the 16th day of February, 1833, I have hereunto set my Hand and caused the Seal of said Department to be affixed at Harrisburg, this fourth day of April 1899

Jameau Pitta
Secretary of Internal Affairs.